

# LINKSYS®

A Division of Cisco Systems, Inc.



2.4GHz  
802.11g Wireless-G

Ethernet Bridge

User Guide



Model No. **WET54G v2**



## Copyright and Trademarks

Specifications are subject to change without notice. Linksys is a registered trademark or trademark of Cisco Systems, Inc. and/or its affiliates in the U.S. and certain other countries. Copyright © 2003 Cisco Systems, Inc. All rights reserved. Other brands and product names are trademarks or registered trademarks of their respective holders.

## How to Use this Guide

Your guide to the Wireless-G Ethernet Bridge has been designed to make understanding networking with the Wireless-G Ethernet Bridge easier than ever. Look for the following items when reading this guide:



This checkmark means there is a Note of interest and is something you should pay special attention to while using the Wireless-G Ethernet Bridge.



This exclamation point means there is a Caution or warning and is something that could damage your property or the Wireless-G Ethernet Bridge.



This question mark provides you with a reminder about something you might need to do while using the Wireless-G Ethernet Bridge.

In addition to these symbols, there are definitions for technical terms that are presented like this:

***word: definition.***

Also, each figure (diagram, screenshot, or other image) is provided with a figure number and description, like this:

**Figure 0-1: Sample Figure Description**

Figure numbers and descriptions can also be found in the “List of Figures” section in the “Table of Contents”.

# Table of Contents

<b>Chapter 1: Introduction</b>	<b>1</b>
Welcome	1
What's in this Guide?	2
<b>Chapter 2: Planning Your Wireless Network</b>	<b>4</b>
Network Topology	4
Network Layout	5
<b>Chapter 3: Getting to Know the Wireless-G Ethernet Bridge</b>	<b>6</b>
The Back Panel	6
The Front Panel	7
<b>Chapter 4: Connecting the Wireless-G Ethernet Bridge for Setup</b>	<b>8</b>
<b>Chapter 5: Setting Up the Wireless-G Ethernet Bridge</b>	<b>9</b>
<b>Chapter 6: Connecting the Wireless-G Ethernet Bridge for Network Use</b>	<b>13</b>
Connection to a Network Device	13
Placement Options	13
<b>Chapter 7: Using the Wireless-G Ethernet Bridge Web-based Utility</b>	<b>15</b>
Overview	15
Starting the Web-based Utility	15
Setup	16
Password	18
Advanced	19
Status	20
Help	21
<b>Appendix A: Troubleshooting</b>	<b>23</b>
Common Problems and Solutions	23
Frequently Asked Questions	24
<b>Appendix B: Wireless Security</b>	<b>27</b>
Security Precautions	27
Security Threats Facing Wireless Networks	27
<b>Appendix C: Upgrading Firmware</b>	<b>29</b>
<b>Appendix D: Windows Help</b>	<b>30</b>
<b>Appendix E: Glossary</b>	<b>31</b>

<b>Appendix F: Specifications</b>	<b>37</b>
<b>Appendix G: Warranty Information</b>	<b>39</b>
<b>Appendix H: Regulatory Information</b>	<b>40</b>
FCC Statement	40
Industry Canada (Canada)	40
Compliance Information for 2.4-GHz Wireless Products Relevant to EU and Other Countries Following EU Directive 1999/5/EC (R&TTE Directive)	41
<b>Appendix I: Contact Information</b>	<b>44</b>

# List of Figures

Figure 2-1: Infrastructure Network	4
Figure 2-2: Ad-Hoc Network	5
Figure 2-3: Network Using Wireless Bridging	5
Figure 3-1: Back Panel	6
Figure 3-2: Front Panel	7
Figure 4-1: Connect to the Network	8
Figure 4-2: Connect the Power	8
Figure 5-1: Welcome	9
Figure 5-2: Connection	9
Figure 5-3: List of Bridges	10
Figure 5-4: Password	10
Figure 5-5: Mode Settings	10
Figure 5-6: Wireless Settings	11
Figure 5-7: IP Settings	11
Figure 5-8: Security Settings	12
Figure 5-9: Confirmation	12
Figure 5-10: Congratulations	12
Figure 6-1: Horizontal Placement	13
Figure 6-2: Vertical Placement	14
Figure 7-1: Password Screen	15
Figure 7-2: Setup Tab	16
Figure 7-3: Site Survey	17
Figure 7-4: WEP Encryption	18
Figure 7-5: Password Tab	18
Figure 7-6: Advanced Settings Tab	19
Figure 7-7: Status Tab	20
Figure 7-8: Help Tab	21
Figure 7-9: Firmware Upgrade	22
Figure C-1: Firmware Upgrade	29

# Chapter 1: Introduction

## Welcome

Thank you for choosing the Wireless-G Ethernet Bridge. The versatile Wireless-G Ethernet Bridge can make any wired Ethernet-equipped device a part of your wireless network. At home, use the Bridge to connect game consoles, set-top boxes, or computers to your Wireless-G network and its shared high-speed Internet connection. In the office, convert your Ethernet-wired printer, camera, notebook or desktop into a wireless networked device.

It's completely driver-free, so it works on any platform and under any operating system! Since there's no drivers to load, setup is a snap—configure the network settings through your PC's web browser, then plug it into your device and go. And physical installation is simplified by support for Power Over Ethernet. With an optional POE Adapter, you can mount the Bridge wherever you want—power and data are both supplied through the Category 5 Ethernet cable.

You can also use the Wireless-G Ethernet Bridge as a kind of “cable-less cable” to connect remote areas together. Maybe Shipping is all the way across the warehouse from Receiving. Or maybe you want to set up a home office in your detached garage. With a Wireless-G Ethernet Bridge in the garage, and another one (or a Wireless-G Access Point) in the house, you're connected—no digging trenches, and no overhead wires. Let the Wireless-G Ethernet Bridge from Linksys open up exciting new possibilities for your wireless network.

Use the instructions in this Guide to help you set up and connect the Bridge. These instructions should be all you need to get the most out of the Wireless-G Ethernet Bridge.

**802.11g:** *an IEEE wireless networking standard that specifies a maximum data transfer rate of 54Mbps, an operating frequency of 2.4GHz, and backward compatibility with 802.11b devices.*

**Ethernet:** *an IEEE standard network protocol that specifies how data is placed on and retrieved from a common transmission medium.*

## What's in this Guide?

This user guide covers the steps for setting up and using the Wireless-G Ethernet Bridge.

- **Chapter 1: Introduction**  
This chapter describes the Wireless-G Ethernet Bridge applications and this user guide.
- **Chapter 2: Planning your Wireless Network**  
This chapter describes the basics of wireless networking.
- **Chapter 3: Getting to Know the Wireless-G Ethernet Bridge**  
This chapter describes the physical features of the Bridge.
- **Chapter 4: Connecting the Wireless-G Ethernet Bridge for Setup.**  
This chapter instructs you on how to connect the Bridge to your network for setup.
- **Chapter 5: Setting Up the Wireless-G Ethernet Bridge.**  
This chapter explains how to set up the Bridge using the Setup Wizard.
- **Chapter 6: Connecting the Wireless-G Ethernet Bridge for Network Use.**  
This chapter explains how to connect the Bridge to a network device so the device can join your wireless network. It also describes placement options for the Bridge.
- **Chapter 7: Using the Wireless-G Ethernet Bridge Web-based Utility**  
This chapter explains how to use the Web-based Utility so you can change the Bridge's settings or advanced configuration.
- **Appendix A: Troubleshooting**  
This appendix describes some problems and solutions, as well as frequently asked questions, regarding installation and use of the Wireless-G Ethernet Bridge.
- **Appendix B: Wireless Security**  
This appendix explains the risks of wireless networking and some solutions to reduce the risks.
- **Appendix C: Upgrading Firmware**  
This appendix instructs you on how to upgrade the firmware on the Bridge should you need to do so.
- **Appendix D: Windows Help**  
This appendix describes how you can use Windows Help for instructions about networking, such as installing the TCP/IP protocol.

## Wireless-G Ethernet Bridge

- **Appendix E: Glossary**  
This appendix gives a brief glossary of terms frequently used in networking.
- **Appendix F: Specifications**  
This appendix provides the technical specifications for the Bridge.
- **Appendix G: Warranty Information**  
This appendix supplies the warranty information for the Bridge.
- **Appendix H: Regulatory Information**  
This appendix supplies the regulatory information regarding the Bridge.
- **Appendix I: Contact Information**  
This appendix provides contact information for a variety of Linksys resources, including Technical Support.

# Chapter 2: Planning Your Wireless Network

## Network Topology

A wireless local area network (WLAN) is exactly like a regular local area network (LAN), except that each computer in the WLAN uses a wireless device to connect to the network. Computers in a WLAN share the same frequency channel and SSID, which is an identification name shared by the wireless devices belonging to the same wireless network.

### Ad-Hoc versus Infrastructure Mode

Unlike wired networks, wireless networks have two different modes in which they may be set up: infrastructure and ad-hoc. An infrastructure configuration is a WLAN and wired LAN communicating to each other through an access point. An ad-hoc configuration is wireless-equipped computers communicating directly with each other. Choosing between these two modes depends on whether or not the wireless network needs to share data or peripherals with a wired network or not.

If the computers on the wireless network need to be accessible by a wired network or need to share a peripheral, such as a printer, with the wired network computers, the wireless network should be set up in Infrastructure mode. The basis of Infrastructure mode centers around an access point, which serves as the main point of communications in a wireless network (see Figure 2-1). Access points transmit data to PCs equipped with wireless network cards, which can roam within a certain radial range of the access point. Multiple access points can be arranged to work in succession to extend the roaming range, and can be set up to communicate with your Ethernet hardware as well.

If the wireless network is relatively small and needs to share resources only with the other computers on the wireless network, then the Ad-Hoc mode can be used. Ad-Hoc mode allows computers equipped with wireless transmitters and receivers to communicate directly with each other, eliminating the need for an access point. The drawback of this mode is that in Ad-Hoc mode, wireless-equipped computers are not able to communicate with computers on a wired network. And, of course, communication between the wireless-equipped computers is limited by the distance and interference directly between them.

Figure 2-2 shows a typical scenario of four Wireless-G Ethernet Bridges in ad-hoc mode. Figure 2-3 shows a typical wireless bridging scenario using two Wireless-G Ethernet Bridges. Each wireless network is connected to a Wireless-G Ethernet Bridge through a switch. A separate notebook computer is equipped with a wireless network adapter and can communicate with either wireless network when it is configured with the appropriate SSID and channel.

**LAN (Local Area Network):** the computers and networking products that make up your local network.

**SSID:** your wireless network's name.

**Infrastructure:** a wireless network that is bridged to a wired network via an access point.

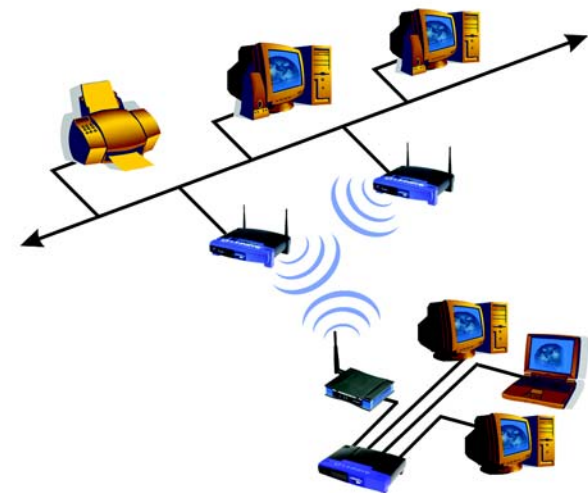


Figure 2-1: Infrastructure Network

**Ad-hoc:** a group of wireless devices communicating directly to each other (peer-to-peer) without the use of an access point.

## Network Layout

The Wireless-G Ethernet Bridge is compatible with all 802.11b and 802.11g routers, such as model numbers BEFW11S4 and WRT54G, as well as access points, including model numbers WAP11 and WAP54G. The Camera will also communicate with network adapters, such as the Wireless-B and Wireless-G Network Adapters (model numbers WPC11 and WPC54G) for your laptop computers, Wireless-B and Wireless-G PCI Adapters (model numbers WMP11 and WMP54G) for your desktop PCs, and Wireless-B and Wireless-G USB Adapters (model numbers WUSB11 and WUSB54G) for your computers when you want to enjoy USB connectivity.

With these, and many other, Linksys products, your networking options are limitless. Go to the Linksys website at [www.linksys.com](http://www.linksys.com) for more information about products that work with the Wireless-G Ethernet Bridge.



Figure 2-2: Ad-Hoc Network



Figure 2-3: Network Using Wireless Bridging

# Chapter 3: Getting to Know the Wireless-G Ethernet Bridge

## The Back Panel

All connections to the Bridge are made through the ports on its back panel, shown in Figure 3-1.

**Reset** When pressed, the Reset button resets the Bridge to its factory default settings.



**Important:** If you reset the Wireless-G Ethernet Bridge, you will erase all of your settings (WEP encryption, wireless settings, etc.) and replace them with the factory defaults. Do not reset the Wireless-G Ethernet Bridge if you want to retain these settings.

**LAN** The LAN port is where you will connect the Ethernet network cable.

**Power** The Power port is where you will connect the power adapter.



**NOTE:** If you use a Power over Ethernet (PoE) device to supply data and power through the Ethernet network cable, then you do not need to use the Power port.

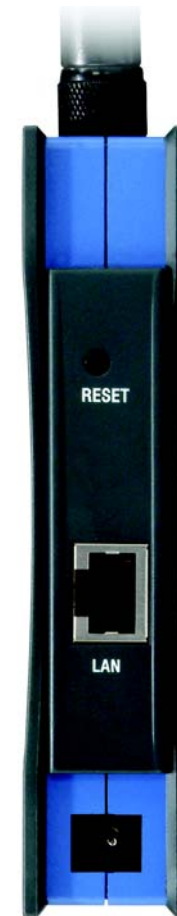


Figure 3-1: Back Panel

## The Front Panel

The LEDs indicate network activity experienced by the Bridge. (See Figure 3-2.)

- Power** Green. The Power LED will light up when the Bridge is powered on. While the Bridge is booting up and performing a self-test, the Power LED will flash. It will stop flashing and remain lit when the self-test has ended.
- Ethernet** Green. The Ethernet LED will be lit steadily when the Bridge is connected to the wired network. The LED will flash when there is wired network traffic.
- Wireless-G** Green. The Wireless-G LED will be lit steadily when the Bridge is connected to the wireless network. The LED will flash when there is wireless network traffic.

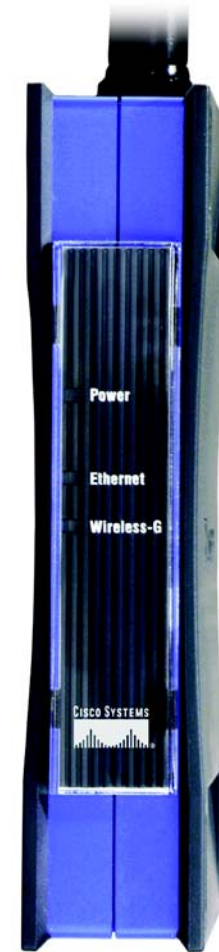


Figure 3-2: Front Panel

# Chapter 4: Connecting the Wireless-G Ethernet Bridge for Setup

1. Attach the Bridge's antenna.
2. Plug the included Ethernet network cable into the LAN port on the back panel of the Bridge, shown in Figure 4-1.
3. Plug the other end of the Ethernet network cable into the RJ-45 port of the hub, switch, or PC you wish to use to configure the Bridge.
4. Plug the supplied power cable into the Power port on the back panel of the Bridge, shown in Figure 4-2. Then plug the other end into an electrical outlet.

Proceed to "Chapter 5: Setting Up the Wireless-G Ethernet Bridge."



Figure 4-1: Connect to the Network



Figure 4-2: Connect the Power

# Chapter 5: Setting Up the Wireless-G Ethernet Bridge

Now that you've connected the Wireless-G Ethernet Bridge to your wired network, you are ready to set it up. The Setup Wizard will guide you through all the necessary steps.

1. Insert the Setup CD-ROM into your PC's CD-ROM drive. The Setup Utility should run automatically, and the screen in Figure 5-1 should appear. If it does not, click the **Start** button and choose **Run**. In the field that appears, enter **D:\setup.exe** (if "D" is the letter of your CD-ROM drive).
  - **Setup** - Click the **Setup** button to proceed with the Setup Wizard.
  - **User Guide** - Click the **User Guide** button to open the PDF file of this User Guide.
  - **LINKSYS Web** - Click the **LINKSYS Web** button to access the Linksys website using an active Internet connection.
  - **Exit** - Click the **Exit** button to exit the Setup Wizard.
2. Click the **Setup** button to begin the setup process.
3. Make sure the Bridge is correctly connected to your wired network (see Figure 5-2). Then click the **Next** button.



**Note:** While the Wireless-G Ethernet Bridge has been designed to work correctly right out of the box, setting it up on a wireless computer will require you to use the Linksys default settings (SSID: linksys and mode: infrastructure). These settings can then be changed through the Bridge's Setup Wizard or Web-based Utility.



Figure 5-1: Welcome



Figure 5-2: Connection

## Wireless-G Ethernet Bridge

- The screen shown in Figure 5-3 displays a list of Wireless-G Ethernet Bridges on your network, along with the status information for each Bridge. (If you have only one Bridge on your network, it will be the only one displayed.) Select the Bridge you are currently installing by clicking its name in the *Selection* box. Write down the IP address of the Wireless-G Ethernet Bridge, so you can use it to access the Web-based Utility later. Then click the **Yes** button.
- For security purposes, you will be asked for your password in order to access the Bridge, as shown in Figure 5-4. In lowercase letters, enter **admin** in the *Password* field (later you can change the password through the Web-based Utility). Then click the **Enter** button.
- The screen shown in Figure 5-5 shows a choice of two wireless modes. Click the **Infrastructure** radio button if you want your wireless computers to network with computers on your wired network using a wireless access point. Click the **Ad-Hoc** radio button if you want multiple wireless computers to network directly with each other. Do not use the Ad-Hoc mode if you want to network your wireless computers with computers on your wired network.

In the *WB Name* field, enter a unique name for the Bridge. Memorable names are helpful, especially if you are using multiple bridges on the same network. Click the **Next** button to continue or the **Back** button to return to the previous screen.



Figure 5-3: List of Bridges



Figure 5-4: Password

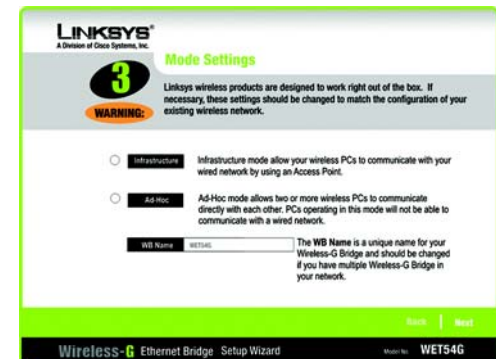


Figure 5-5: Mode Settings

7. The *Wireless Settings* screen, shown in Figure 5-6, will now appear. Enter your wireless network's SSID. If you chose Ad-Hoc mode, select the channel at which the network broadcasts its wireless signal.

If you have Wireless-G (802.11g) and Wireless-B (802.11b) devices in your network, then keep the default *Network Mode* setting, **Mixed**. If you have only Wireless-G devices, select **G-Only**. Then click the **Next** button to continue or the **Back** button to return to the previous screen.

- SSID - The SSID is the unique name shared among all devices in a wireless network. The SSID must be identical for all devices in the wireless network. It is case-sensitive and must not exceed 32 alphanumeric characters, which can be any keyboard character.
  - Channel - From the drop-down menu, select the appropriate channel to match your network settings (available for Ad-Hoc mode only). All devices in your wireless network must use the same channel in order to communicate.
  - Network Mode - Keep the default setting, **Mixed**, if you have Wireless-G and Wireless-B devices in your network. Select **G-Only** if you have only Wireless-G devices in your network.
8. The *IP Settings* screen will appear next, shown in Figure 5-7. If your network has a DHCP server, click the radio button next to **Automatically obtain an IP address (DHCP)**. Click the **Next** button to continue or the **Back** button to return to the previous screen. Then proceed to step 9.

If your network does not have a DHCP server, click the radio button next to **Set IP configuration manually to select this option**. Enter an IP Address, IP Mask, and Gateway appropriate to your network. You must specify an IP address on this screen. If you are unsure about the IP Mask and Gateway, it is better to leave these two fields blank. Click the **Next** button to continue or the **Back** button to return to the previous screen. Then proceed to step 9.

- IP Address - This IP address must be unique to your network.
- IP Mask - The Bridge's IP Mask (also known as Subnet Mask) must be the same as your wired network's Subnet Mask.
- Gateway - Enter the IP address of your network's Gateway (usually this is your router's IP address).



Figure 5-6: Wireless Settings

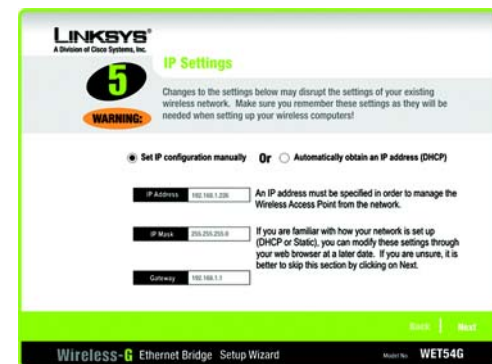


Figure 5-7: IP Settings

9. The *Security Settings* screen, shown in Figure 5-8, appears next. Enable or disable Wired Equivalent Privacy (WEP) encryption for your wireless network. If you enable WEP, select the level of WEP encryption, and then enter a Passphrase. (If you want to enter a WEP key manually, then leave the *Passphrase* field blank, and complete the *Key 1* field.) If you want to disable WEP encryption, keep the default, **Disabled**. Click the **Next** button to continue.
  - WEP (Disabled/64-bit WEP/128-bit WEP) - In order to utilize WEP encryption, select **64-bit** or **128-bit WEP** from the drop-down menu. Then enter a Passphrase. (If you want to enter a WEP key manually, then leave the *Passphrase* field blank, and complete the *Key 1* field.) If you do not want to use WEP encryption, keep the default setting, **Disabled**.
  - Passphrase - Instead of manually entering a WEP key, you can enter a Passphrase, so a WEP key will be automatically generated. The Passphrase is case-sensitive and should have 16 or fewer alphanumeric characters. It must match the passphrase of your wireless network and is compatible with Linksys wireless products only. (You will have to enter the WEP key(s) manually on any non-Linksys wireless products.

If you want to manually enter a WEP key, leave the *Passphrase* field blank and complete the *Key 1* field.

- Key 1 - If you entered a Passphrase, then you will see the automatically generated WEP key. Click the **Next** button, and proceed to step 10.

If you did not enter a Passphrase, then enter a WEP key in the *Key 1* field. If you are using 64-bit WEP encryption, then the key must consist of exactly 10 hexadecimal characters. If you are using 128-bit WEP encryption, then the key must consist of exactly 26 hexadecimal characters. Valid hexadecimal characters are "0"- "9" and "A"- "F". Then click the **Next** button, and proceed to step 10.

10. Review your settings on the *Confirmation* screen, shown in Figure 5-9. Write down the Bridge's IP Address if you want to configure advanced settings through the Bridge's Web-based Utility. Click the **Yes** button to save these settings. Click the **No** button to exit the Setup Wizard.
11. The next screen, shown in Figure 5-10, shows that the configuration is complete. To configure any other Wireless-G Ethernet Bridges on your network, run this Setup Wizard again. To register the Bridge, click the **Online Registration** button. To exit the Setup Wizard, click the **Exit** button.

**The Wireless-G Ethernet Bridge is now successfully configured for your network.**

For advanced configuration, proceed to "Chapter 7: Using the Wireless-G Ethernet Bridge Web-based Utility." Otherwise, go to "Chapter 6: Connecting the Wireless-G Ethernet Bridge for Network Use."

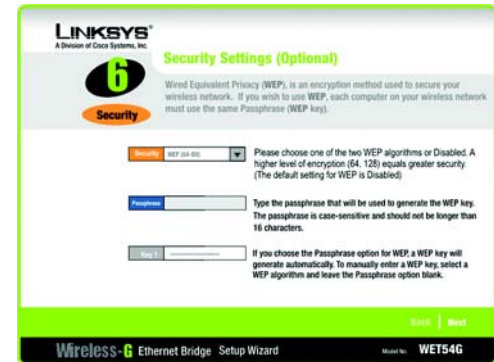


Figure 5-8: Security Settings



Figure 5-9: Confirmation



Figure 5-10: Congratulations

# Chapter 6: Connecting the Wireless-G Ethernet Bridge for Network Use

## Connection to a Network Device

1. After configuration, unplug the power cable from the electrical outlet, and unplug the Ethernet network cable from the PC.
2. Plug the Ethernet network cable into the RJ-45 port on the Ethernet-ready network device you wish to add to the wireless network.
3. Plug the power cable into a local electrical outlet.

The installation of the Wireless-G Ethernet Bridge is complete. Proceed to the next section, "Placement Options," if you want to mount the Bridge on a wall or have the Bridge stand on a surface.

## Placement Options

There are three ways to place the Bridge. The first way is to place the Bridge horizontally on a surface, as shown in Figure 6-1. (If necessary, adjust the antenna so that it points straight up in the air.) The second way is to hang the Bridge on a wall, with the Bridge in a vertical position. The third way is to stand the Bridge vertically on a surface. The second and third options are explained in further detail below.

### Wall Mount Option

1. The Bridge has eight rubber inserts, four on each side. Depending on how you want to mount the Bridge, remove two of the rubber inserts.
2. Attach two screws to the wall, so that the Bridge's wall-mount slots line up with the two screws.
3. Maneuver the Bridge so the screws are inserted into the two slots.
4. If necessary, adjust the antenna so that it points straight up in the air.

The installation of the Wireless-G Ethernet Bridge is complete.



**Note:** The Bridge features Power Over Ethernet (PoE) support. PoE technology allows a PoE adapter (also known as a power injector, power hub, or inline power device) to supply data and power to an Ethernet device using a single Ethernet network cable. To use the Bridge's PoE feature, follow the instructions for your specific PoE device.



Figure 6-1: Horizontal Placement

## Stand Option

1. The Bridge has eight rubber inserts, four on each side. Remove the two rubber inserts that are adjacent to the power port.
2. The Bridge includes two triangular stands. Insert a stand into an opening. Push the stand up to snap it into place.
3. Repeat step 2 using the second stand.
4. Place the Bridge in an appropriate location.
5. If necessary, adjust the antenna so that it points straight up in the air. (See Figure 6-2.)

**The installation of the Wireless-G Ethernet Bridge is complete.**



Figure 6-2: Vertical Placement

# Chapter 7: Using the Wireless-G Ethernet Bridge Web-based Utility

## Overview

The Bridge is designed to function properly after you configure it using the Setup Wizard. However, if you would like to change these basic settings or make advanced configuration changes, use your web browser and the Wireless-G Ethernet Bridge Web-based Utility. This chapter explains how to use the Utility.

## Starting the Web-based Utility

1. Open your web browser, and enter the IP address of the Wireless-G Ethernet Bridge (the default is **192.168.1.226**). Press the **Enter** key, and the screen shown in Figure 7-1 will appear. In lowercase letters, enter the default password, **admin**, in the *Password* field. Click the **OK** button. You can set a new password on the *Password* screen later.
2. The Utility's *Setup* screen, shown in Figure 7-2, will appear.

The Utility provides a convenient, web-browser-based way to alter the Bridge's settings. It offers five main tabs:

- **Setup** - Enables you to configure the IP address and wireless settings.
- **Password** - Allows you to change the password or reset all settings to factory defaults.
- **Advanced** - Lets you change the advanced wireless settings and clone a MAC address onto the Bridge.
- **Status** - Displays the Bridge's current settings.
- **Help** - Provides explanations of various configuration settings and links to online technical support resources. You can also upgrade the Bridge's firmware using the *Help* screen.



Figure 7-1: Password Screen



**Have You:** Enabled TCP/IP on your PCs? PCs communicate over the network with this protocol. Refer to “Appendix D: Windows Help” for more information on TCP/IP.



**Note:** The Wireless-G Ethernet Bridge is designed to function properly after you use the Setup Wizard. However, if you would like to change its basic settings or make advanced configuration changes, use your web browser and the Wireless-G Ethernet Bridge Web-based Utility.

## Setup

The *Setup* screen, shown in Figure 7-2, lets you configure the wired and wireless network settings for the Bridge.

- **Firmware** - The version number of the Bridge's firmware is displayed here. Firmware should be upgraded **ONLY** if you experience problems with the Bridge. Firmware updates are posted at [www.linksys.com](http://www.linksys.com).
- **MAC Address** - The MAC Address of the Bridge is displayed here.

### LAN

- **Device Name** - You may assign any name to the Bridge. Unique, memorable names are helpful, especially if you are using multiple bridges on the same wireless network.
- **Configuration Type** - If the Bridge will obtain an IP address automatically from a DHCP server, such as a router, then select **Automatic Configuration-DHCP**. If you are assigning the Bridge a static IP address, then select **Static IP Address**, and enter an IP Address, Subnet Mask, and Gateway address in the *IP Address*, *Subnet Mask*, and *Gateway* fields.

### Wireless

- **SSID** - The SSID is the network name shared among all devices in a wireless network. The SSID must be identical for all devices in the wireless network. It is case-sensitive and must not exceed 32 alphanumeric characters, which may be any keyboard character (do not use any spaces). Make sure this setting is the same for all devices in your wireless network. For added security, Linksys recommends that you change the default SSID (linksys) to a name of your choice.

To search for available wireless networks, click the **Site Survey** button.

- **Network Type** - Choose a wireless operating mode for the Bridge. Keep the default setting, **Infrastructure**, if you want your wireless-equipped device to communicate with computers and other devices on your wired network using a wireless access point. Select **Ad-Hoc** button if you want multiple wireless-equipped devices to communicate directly with each other.

If you chose Ad-Hoc mode, then select the correct operating channel for your network from the *Channel* drop-down menu. This should match the channel setting of the other devices in your wireless network.

Select the appropriate network mode. Keep the default, **Mixed**, if you have Wireless-G (802.11g) and Wireless-B (802.11b) devices in your network. Select **G-Only** if you have only Wireless-G devices in your network.

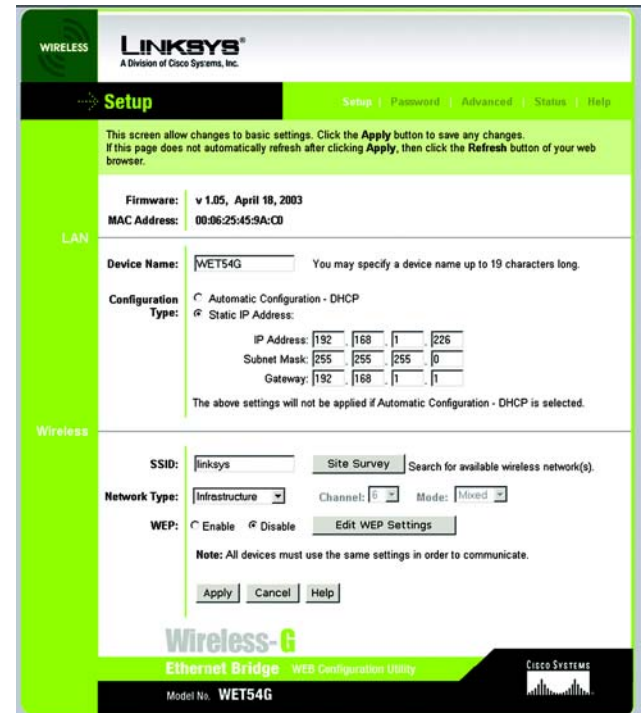


Figure 7-2: Setup Tab

- WEP - To enable WEP encryption, click the **Enable** radio button. To increase wireless network security, using WEP encryption is strongly recommended. Then click the **Edit WEP Settings** button to configure the WEP settings. To disable WEP encryption, keep the default, **Disable**.

An acronym for Wired Equivalent Privacy, WEP is an encryption method used to protect your wireless data communications. WEP uses 64-bit or 128-bit keys to provide access control to your network and encryption security for every data transmission. To decode a data transmission, each device in a network must use an identical WEP key. Higher encryption levels offer higher levels of security, but due to the complexity of the encryption, they may decrease network performance.

Click the **Apply** button to save your changes. If your page doesn't automatically refresh itself, then click the **Refresh** button of your web browser. Click the **Cancel** button to cancel your changes. Click the **Help** button for additional on-screen information.

- **Wireless Site Survey**

The *Wireless Site Survey* screen, shown in Figure 7-3 shows all the wireless networks detected by the Bridge and their general information. You can use this screen to connect to one of these networks.

For each wireless network detected, the following information is displayed:

- SSID - The network name. To join a wireless network, click its SSID.
- MAC Address - The MAC address of the network's access point.
- Channel - The channel setting.
- Signal Strength (%) - The percentage of wireless signal strength.
- Mode - The type of wireless standard, network mode, and status of WEP encryption.

Click the **Refresh** button to obtain the most up-to-date data. Click the **Cancel** button to close this screen. Click the **Help** button for additional on-screen information.

- **WEP Encryption**

Use the *WEP Encryption* screen, shown in Figure 7-4, to configure the WEP encryption level and WEP keys for the Bridge.

- Default Key - Select which WEP key (1-4) will be used when the Bridge sends data. Make sure the other wireless-equipped devices are using the same key.

SSID	MAC Address	Channel	Signal Strength(%)	Mode
linksys	28:9F:25:A5:AB:13	6	77%	802.11b, Infra
test	85:1B:25:2B:9F:C4	1	76%	802.11b, Infra,WEP
test1	25:2B:DD:85:1B:37	11	73%	802.11g, Infra

Figure 7-3: Site Survey



**NOTE:** Make sure that your WEP key matches the WEP key of the wireless network you want to join. Otherwise, the connection will fail.

- WEP Encryption - In order to use WEP encryption, select **64-Bit (10 hex digits)** or **128-Bit (26 hex digits)** from the drop-down menu.
- Passphrase - Instead of manually entering WEP keys, you can enter a Passphrase. This Passphrase is used to generate one or more WEP keys. It is case-sensitive and should not be longer than 16 alphanumeric characters. (The Passphrase function is compatible with Linksys wireless products only. If you want to communicate with non-Linksys wireless products, you will need to enter your WEP key manually on the non-Linksys wireless products.) After you enter the Passphrase, click the **Generate** button to create WEP key(s).
- Keys 1-4 - If you are not using a Passphrase, then you can enter one or more WEP keys manually.

In each key field, manually enter a set of values. (Do not leave a key field blank, and do not enter all zeroes. These are not valid key values.) If you are using 64-bit WEP encryption, then each key must consist of exactly 10 hexadecimal characters in length. If you are using 128-bit WEP encryption, then each key must consist of exactly 26 hexadecimal characters in length. Valid hexadecimal characters are "0"-"9" and "A"-"F".

Click the **Apply** button to save your changes. If your page doesn't automatically refresh itself, then click the **Refresh** button of your web browser. Click the **Cancel** button to cancel your changes. Click the **Help** button for additional on-screen information.

## Password

The *Password* screen, shown in Figure 7-5, lets you change the Bridge's Password and restore the factory default settings.

- Administrative Password - It is strongly recommended that you change the factory default password of the Bridge from admin to a new password that you create. All users who try to access the Bridge's Web-based Utility will be prompted for the Bridge's Password. The new Password must not exceed 12 characters in length and must not include any spaces. Enter the new Password a second time to confirm it.
- Restore Factory Defaults - Click the **Yes** radio button to reset all configuration settings to their default values. If you do not want to restore the factory defaults, then keep the default setting, **No**.

To save your changes, click the **Apply** button. Click the **Cancel** button to cancel your changes. Click the **Help** button for additional on-screen information.

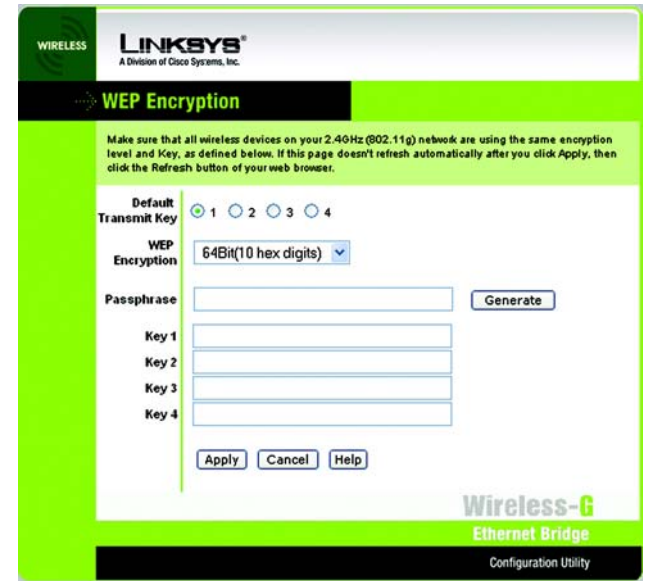


Figure 7-4: WEP Encryption

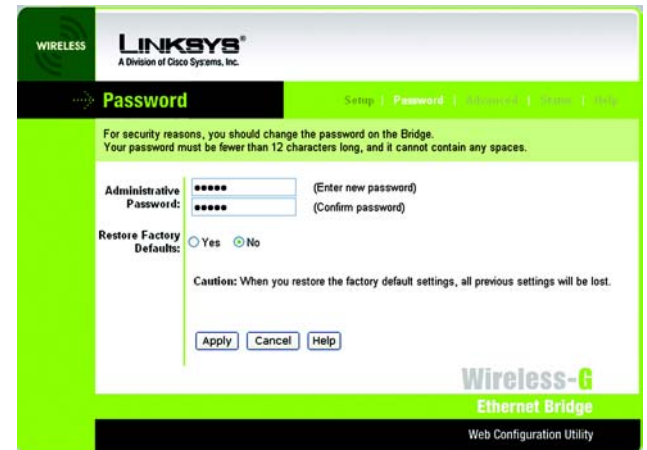


Figure 7-5: Password Tab



**IMPORTANT:** Any settings you have saved will be lost if the default settings are restored.

## Advanced

Use the *Advanced Settings* screen, shown in Figure 7-6, to customize advanced wireless settings and clone a MAC address onto the Bridge.

### Wireless

- **Transmission Rate** - The default setting is **Auto**. The range is from 1 to 54Mbps.

The rate of data transmission should be set depending on the speed of your wireless network. You can select from a range of transmission speeds, or you can keep the default setting, **Auto**, to have the Bridge automatically use the fastest possible data rate and enable the Auto-Fallback feature. Auto-Fallback will negotiate the best possible connection speed between the Bridge and another wireless-equipped device.

- **Authentication Type** - The default setting is **Auto**. The choices are **Auto**, **Open**, and **Shared**.

This setting allows the Bridge to authenticate communication with the wireless devices in your network. With the Shared key setting, all wireless devices must have the same WEP keys so that the Bridge and the client can authenticate each other and start transmitting data. With the Open system setting, any device can join a network without performing any security check. Using the Auto setting, the Bridge will automatically detect whether a wireless device uses shared key or open system authentication, and then it will transmit data using the appropriate authentication type.

- **RTS Threshold** - This value should remain at its default setting of **2347**. The range is 0-2347 bytes. Should you encounter inconsistent data flow, only minor modifications are recommended. If a network packet is smaller than the preset RTS threshold size, the RTS/CTS mechanism will not be enabled. The Router sends Request to Send (RTS) frames to a particular receiving station and negotiates the sending of a data frame. After receiving an RTS, the wireless station responds with a Clear to Send (CTS) frame to acknowledge the right to begin transmission.
- **Fragmentation Threshold** - This value should remain at its default setting of **2346**. The range is 256-2346 bytes. It specifies the maximum size for a packet before data is fragmented into multiple packets. If you experience a high packet error rate, you may slightly increase the Fragmentation Threshold. Setting the Fragmentation Threshold too low may result in poor network performance. Only minor modifications of this value are recommended.

### MAC Address

- **Cloning Mode** - You can clone the MAC address of any network device onto the Bridge. To disable MAC address cloning, keep the default setting, **Disable**. To use the MAC cloning feature, select **Enable**.

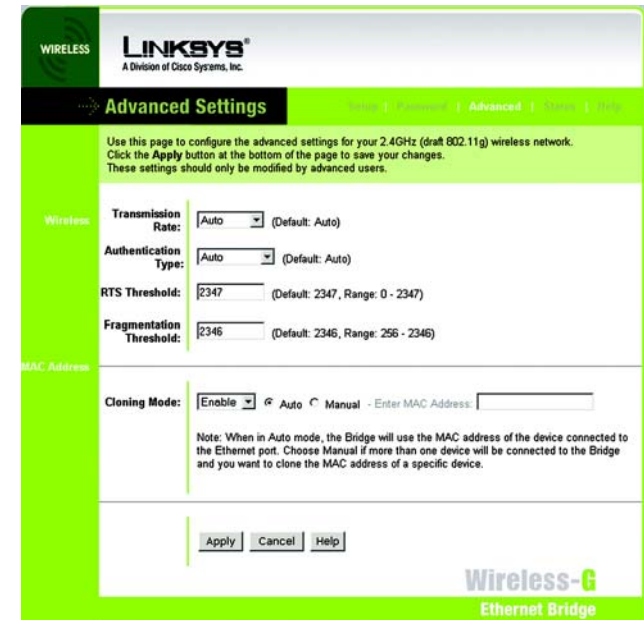


Figure 7-6: Advanced Settings Tab

If you have enabled MAC cloning, then select **Auto** if you want to clone the MAC address of the device currently connected to the Bridge's LAN port. The Bridge will actively scan for a new MAC address to be cloned whenever you disconnect and re-connect the Bridge through its LAN port. Select **Manual** if you want to specify a MAC address in the *Enter MAC Address* field. This is useful when the Bridge is connected to multiple devices through a switch or a hub.

Click the **Apply** button to save your changes. If your page doesn't automatically refresh itself, then click the **Refresh** button of your web browser. Click the **Cancel** button to cancel your changes. Click the **Help** button for additional on-screen information.

## Status

The *Status* screen displayed the Bridge's current status and settings. All information is read-only.

- Device Name - The name you have assigned to the Bridge is displayed here.
- Firmware Version - The version number of the Bridge's firmware is displayed here. Firmware updates are posted at [www.linksys.com](http://www.linksys.com). Firmware should be upgraded **ONLY** if you experience problems with the Bridge. To upgrade the Bridge's firmware, use the *Help* screen.
- MAC Address - The MAC Address of the Bridge is displayed here.

## LAN Settings

- IP Address - The Bridge's IP Address is displayed here.
- Subnet Mask - The Bridge's Subnet Mask is displayed here.
- Gateway - The Gateway address for the Bridge is displayed here.

## LAN Statistics

- Ethernet TX - The number of packets transmitted to the Ethernet network is displayed here.
- Ethernet RX - The number of packets received from the Ethernet network is displayed here.
- Wireless TX - The number of packets transmitted to the wireless network is displayed here.
- Wireless RX - The number of packets received from the wireless network is displayed here.



Figure 7-7: Status Tab

## Wireless Settings

- SSID - The Bridge's SSID is displayed here.
- Network Type - The Bridge's mode is displayed here.
- Channel - The Bridge's channel setting is displayed here.
- WEP - The status of the Bridge's WEP encryption is displayed here.
- TX Rate - The Bridge's transmission rate is displayed here.
- Link Quality - The quality of the Bridge's connection is displayed here.

Click the **Refresh** button to obtain the most up-to-date settings and statistics. Click the **Help** button for additional on-screen information.

## Help

The *Help* screen offers links to all of the help information for the Web-based Utility's screens and the Bridge's online technical support resources (all information is read-only). You can also upgrade the Bridge's firmware.

- Linksys Website - Click the **Linksys Website** link to visit Linksys's website, [www.linksys.com](http://www.linksys.com).
- Online manual in PDF format - Click the **Online manual in PDF format** to view this User Guide on-screen. It is in Adobe Acrobat Portable Document File (.pdf) format, so you will need the free Adobe Acrobat Reader to view the pdf. If you do not have the Reader, click the **Adobe Website** link to download it.
- Adobe Website (software for viewing PDF documents) - If you need to download the Adobe Acrobat Reader to view the User Guide pdf, then click the **Adobe Website** link.
- Firmware Upgrade - The version number of the Bridge's firmware is displayed here. Firmware updates are posted at [www.linksys.com](http://www.linksys.com). Firmware should be upgraded **ONLY** if you experience problems with the Bridge.

To upgrade the firmware, follow these instructions:

1. Download the Bridge's firmware upgrade file from the Linksys website, [www.linksys.com](http://www.linksys.com). Then extract the file.
2. On the *Help* screen, click the **Firmware Upgrade** button.

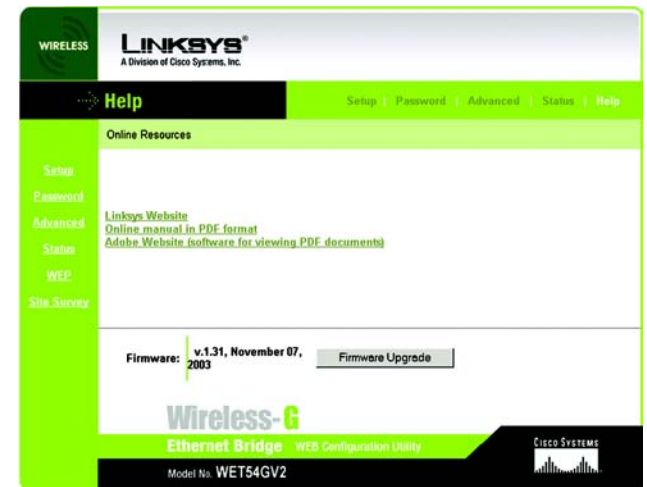


Figure 7-8: Help Tab



**NOTE:** If you upgrade the Bridge's firmware, you may lose its configuration settings.

## Wireless-G Ethernet Bridge

3. The screen shown in Figure 7-9 will appear. In the field provided, enter the name of the extracted firmware upgrade file, or click the **Browse** button to find this file.
4. After you have selected the appropriate file, click the **Upgrade** button, and follow the on-screen instructions.



Figure 7-9: Firmware Upgrade

# Appendix A: Troubleshooting

This appendix consists of two parts: “Common Problems and Solutions” and “Frequently Asked Questions.” This appendix provides solutions to problems that may occur during the installation and operation of the Wireless-G Ethernet Bridge. Read the description below to solve your problems. If you can't find an answer here, check the Linksys website at [www.linksys.com](http://www.linksys.com).

## Common Problems and Solutions

### 1. *I can't connect to the access point.*

Open the Web-based Utility. On the Setup tab, perform the following steps:

- Verify that the operating mode is set to Infrastructure mode.
- Make sure that the SSID is the same as the SSID of the access point.
- On the *WEP Encryption* screen, make sure that all of the WEP settings are the same as the WEP settings of the access point.

### 2. *I want to play head-to-head (ad-hoc) gaming with two Xboxes, but they won't communicate.*

Perform the following steps:

- Make sure both Bridges are set to the same SSID, network mode (Ad-Hoc), channel setting, and WEP settings.
- Verify that the Bridges are set to different IP addresses.
- You need to enable MAC address cloning on the Bridge for each Xbox. Follow these instructions:
  1. Open the Web-based Utility for one of the Bridges.
  2. Click the **Advanced** tab.
  3. Select **Enable** from the *MAC Address Cloning Mode* drop-down menu.
  4. Click the **Auto** radio button.
  5. Click the **Apply** button to save your changes. When you connect the Bridge to its Xbox, the Bridge will automatically clone the Xbox's MAC address.
- Repeat steps 1-5 for the other Bridge.

### 3. *I don't know how to change the Bridge's IP address.*

You have two ways to change the Bridge's IP address.

- Open the Web-based Utility. On the *Setup* screen, click the **Static IP Address** radio button, and change the IP address there.
- If you encounter problems, power the Bridge off and on again, or push the Reset button. Then try to change the IP address again.

**4. *The Bridge-enabled PC won't communicate with a wireless-enabled PC or printer.***

Perform the following steps:

- Check that the wireless-enabled PC or printer is on the same wireless network as the PC using the Bridge.
- Make sure that the SSID and network mode are the same for all devices connected to the same wireless network.
- If the wireless LAN settings are okay, make sure that all the devices are on the same IP network.

**5. *The Web-based Utility won't open.***

Make sure you correctly entered the Bridge's IP address in the *Address* field of your web browser. If you are not sure what the Bridge's IP address is, then run the Setup Wizard. Follow the on-screen instructions until you see a screen that lists all the Wireless-G Ethernet Bridges on your network. Select the Bridge you want to access, and its IP address will appear in the Status box. Enter this IP address in your web browser's *Address* field. For details, refer to "Chapter 5: Setting Up the Wireless-G Ethernet Bridge."

**6. *The Web-based Utility does not recognize my password.***

The password is case-sensitive. Make sure that you are using the correct case(s) when entering the password. If you forget your password, you can push the Bridge's Reset button. This will reset the password to the default setting; however, all other Bridge settings will be reset to the factory defaults as well. To use the default setting, enter **admin** in the *Password* field.

**7. *After I make changes through the Web-based Utility, the new settings aren't displayed on-screen.***

Click the **Refresh** button of your web browser. If the new settings aren't displayed, then unplug the power adapter from the Bridge. Plug the power adapter back in, and then click the **Refresh** button again.

## Frequently Asked Questions

***What is the IEEE 802.11g standard?***

It is one of the IEEE standards for wireless networks. The 802.11g standard allows wireless networking hardware from different manufacturers to communicate, provided that the hardware complies with the 802.11g standard. The 802.11g standard states a maximum data transfer rate of 54Mbps and an operating frequency of 2.4GHz. It is backward compatible with 802.11b devices.

***What is the IEEE 802.11b standard?***

It is one of the IEEE standards for wireless networks. The 802.11b standard allows wireless networking hardware from different manufacturers to communicate, provided that the hardware complies with the 802.11b standard. The 802.11b standard states a maximum data transfer rate of 11Mbps and an operating frequency of 2.4GHz.

***Can I run an application from a remote computer over the wireless network?***

This will depend on whether or not the application is designed to be used over a network. Consult the application's user guide to determine if it supports operation over a network.

***Can I play multiplayer games with other users of the wireless network?***

Yes, as long as the game supports multiple players over a LAN. Refer to the game's user guide for more information.

***What is ad-hoc mode?***

When a wireless network is set to ad-hoc mode, the wireless-equipped computers are configured to communicate directly with each other. The ad-hoc wireless network will not communicate with any wired network.

***What is infrastructure mode?***

When a wireless network is set to infrastructure mode, the wireless network is configured to communicate with a wired network through a wireless access point.

***What is roaming?***

Roaming is the ability of a portable computer user to communicate continuously while moving freely throughout an area greater than that covered by a single wireless network access point. Before using the roaming function, the workstation must make sure that it is the same channel number as the wireless network access point of the dedicated coverage area.

To achieve true seamless connectivity, the wireless LAN must incorporate a number of different functions. Each node and wireless network access point, for example, must always acknowledge receipt of each message. Each node must maintain contact with the wireless network even when not actually transmitting data. Achieving these functions simultaneously requires a dynamic RF networking technology that links wireless network access points and nodes. In such a system, the user's end node undertakes a search for the best possible access to the system. First, it evaluates such factors as signal strength and quality, as well as the message load currently being carried by each wireless network access point and the distance of each wireless network access point to the wired backbone. Based on that information, the node next selects the right wireless network access point and registers its address. Communications between end node and host computer can then be transmitted up and down the backbone.

As the user moves on, the end node's RF transmitter regularly checks the system to determine whether it is in touch with the original wireless network access point or whether it should seek a new one. When a node no longer receives acknowledgment from its original wireless network access point, it undertakes a new search. Upon finding a new wireless network access point, it then re-registers, and the communication process continues.

***What is ISM band?***

The FCC and their counterparts outside of the U.S. have set aside bandwidth for unlicensed use in the ISM (Industrial, Scientific and Medical) band. Spectrum in the vicinity of 2.4 GHz, in particular, is being made available worldwide. This presents a truly revolutionary opportunity to place convenient high speed wireless capabilities in the hands of users around the globe.

***What is Spread Spectrum?***

Spread Spectrum technology is a wideband radio frequency technique developed by the military for use in reliable, secure, mission-critical communications systems. It is designed to trade off bandwidth efficiency for reliability, integrity, and security. In other words, more bandwidth is consumed than in the case of narrowband transmission, but the trade-off produces a signal that is, in effect, louder and thus easier to detect, provided that the receiver knows the parameters of the spread-spectrum signal being broadcast. If a receiver is not tuned to the right frequency, a spread-spectrum signal looks like background noise. There are two main alternatives, Direct Sequence Spread Spectrum (DSSS) and Frequency Hopping Spread Spectrum (FHSS).

***What is DSSS? What is FHSS? And what are their differences?***

Frequency Hopping Spread Spectrum (FHSS) uses a narrowband carrier that changes frequency in a pattern that is known to both transmitter and receiver. Properly synchronized, the net effect is to maintain a single logical channel. To an unintended receiver, FHSS appears to be short-duration impulse noise. Direct Sequence Spread Spectrum (DSSS) generates a redundant bit pattern for each bit to be transmitted. This bit pattern is called a chip (or chipping code). The longer the chip, the greater the probability that the original data can be recovered. Even if one or more bits in the chip are damaged during transmission, statistical techniques embedded in the radio can recover the original data without the need for retransmission. To an unintended receiver, DSSS appears as low power wideband noise and is rejected (ignored) by most narrowband receivers.

***Would the information be intercepted while transmitting on air?***

Linksys products feature two-fold protection in security. On the hardware side, as with Direct Sequence Spread Spectrum technology, it has the inherent security feature of scrambling. On the software side, Linksys products offer the encryption function (WEP) to enhance security and access control. Users can set it up depending upon their needs.

***What is WEP?***

WEP is Wired Equivalent Privacy, a data privacy mechanism based on a 40/64 bit shared key algorithm, as described in the IEEE 802.11 standard.

# Appendix B: Wireless Security

Linksys wants to make wireless networking as safe and easy for you as possible. The current generation of Linksys products provide several network security features, but they require specific action on your part for implementation. So, keep the following in mind whenever you are setting up or using your wireless network.

## Security Precautions

The following is a complete list of security precautions to take (at least steps 1 through 5 should be followed):

1. Change the default SSID.
2. Disable SSID Broadcast.
3. Change the default password for the Administrator account.
4. Enable MAC Address Filtering.
5. Change the SSID periodically.
6. Enable WEP 128-bit Encryption. Please note that this may reduce your network performance.
7. Change the WEP encryption keys periodically.

For information on implementing these security features, refer to “Chapter 5: Setting Up the Wireless-G Ethernet Bridge” or “Chapter 7: Using the Wireless-G Ethernet Bridge Web-based Utility.”

## Security Threats Facing Wireless Networks

Wireless networks are easy to find. Hackers know that in order to join a wireless network, wireless networking products first listen for “beacon messages”. These messages can be easily decrypted and contain much of the network’s information, such as the network’s SSID (Service Set Identifier). Here are the steps you can take:

**Change the administrator’s password regularly.** With every wireless networking device you use, keep in mind that network settings (SSID, WEP keys, etc.) are stored in its firmware. Your network administrator is the only person who can change network settings. If a hacker gets a hold of the administrator’s password, he, too, can change those settings. So, make it harder for a hacker to get that information. Change the administrator’s password regularly.



**Note:** Some of these security features are available only through the network router or access point. Refer to the router or access point’s documentation for more information.

**SSID.** There are several things to keep in mind about the SSID:

1. Disable Broadcast
2. Make it unique
3. Change it often

Most wireless networking devices will give you the option of broadcasting the SSID. While this option may be more convenient, it allows anyone to log into your wireless network. This includes hackers. So, don't broadcast the SSID.

Wireless networking products come with a default SSID set by the factory. (The Linksys default SSID is "linksys".) Hackers know these defaults and can check these against your network. Change your SSID to something unique and not something related to your company or the networking products you use.

Change your SSID regularly so that any hackers who have gained access to your wireless network will have to start from the beginning in trying to break in.

**MAC Addresses.** Enable MAC Address filtering. MAC Address filtering will allow you to provide access to only those wireless nodes with certain MAC Addresses. This makes it harder for a hacker to access your network with a random MAC Address.

**WEP Encryption.** Wired Equivalent Privacy (WEP) is often looked upon as a cure-all for wireless security concerns. This is overstating WEP's ability. Again, this can only provide enough security to make a hacker's job more difficult.

There are several ways that WEP can be maximized:

1. Use the highest level of encryption possible
2. Use "Shared Key" authentication
3. Change your WEP key regularly

Implementing encryption may have a negative impact on your network's performance, but if you are transmitting sensitive data over your network, encryption should be used.

These security recommendations should help keep your mind at ease while you are enjoying the most flexible and convenient technology Linksys has to offer.



**Important:** Always remember that each device in your wireless network **MUST** use the same encryption method and encryption key or your wireless network will not function properly.

# Appendix C: Upgrading Firmware

You can use the Bridge's Web-based Utility to upgrade the firmware; however, firmware should be upgraded **ONLY** if you experience problems with the Bridge.

To upgrade the Bridge's firmware, follow these instructions:

1. Download the Bridge's firmware upgrade file from the Linksys website, [www.linksys.com](http://www.linksys.com).
2. Extract the file on your computer.
3. Open the Bridge's Web-based Utility, and click the **Help** tab.
4. On the *Help* screen, click the **Firmware Upgrade** button.
5. The screen shown in Figure C-1 will appear. In the field provided, enter the name of the extracted firmware upgrade file, or click the **Browse** button to find this file.
6. After you have selected the appropriate file, click the **Upgrade** button, and follow the on-screen instructions.



**NOTE:** If you upgrade the Bridge's firmware, you may lose its configuration settings.



Figure C-1: Firmware Upgrade

# Appendix D: Windows Help

Almost all Linksys wireless products require Microsoft Windows. Windows is the most used operating system in the world and comes with many features that help make networking easier. These features can be accessed through Windows Help and are described in this appendix.

## TCP/IP

Before a computer can communicate with the Bridge, TCP/IP must be enabled. TCP/IP is a set of instructions, or protocol, all PCs follow to communicate over a network. This is true for wireless networks as well. Your PCs will not be able to utilize wireless networking without having TCP/IP enabled. Windows Help provides complete instructions on enabling TCP/IP.

## Shared Resources

If you wish to share printers, folder, or files over your network, Windows Help provides complete instructions on utilizing shared resources.

## Network Neighborhood/My Network Places

Other PCs on your network will appear under Network Neighborhood or My Network Places (depending upon the version of Windows you're running). Windows Help provides complete instructions on adding PCs to your network.

# Appendix E: Glossary

**802.11a** - An IEEE wireless networking standard that specifies a maximum data transfer rate of 54Mbps and an operating frequency of 5GHz.

**802.11b** - An IEEE wireless networking standard that specifies a maximum data transfer rate of 11Mbps and an operating frequency of 2.4GHz.

**802.11g** - An IEEE wireless networking standard that specifies a maximum data transfer rate of 54Mbps, an operating frequency of 2.4GHz, and backward compatibility with 802.11b devices.

**Access Point** - Device that allows wireless-equipped computers and other devices to communicate with a wired network. Also used to expand the range of a wireless network.

**Adapter** - This is a device that adds network functionality to your PC.

**Ad-hoc** - A group of wireless devices communicating directly with each other (peer-to-peer) without the use of an access point.

**Backbone** - The part of a network that connects most of the systems and networks together, and handles the most data.

**Bandwidth** - The transmission capacity of a given device or network.

**Beacon Interval** - The frequency interval of the beacon, which is a packet broadcast by a router to synchronize a wireless network.

**Bit** - A binary digit.

**Boot** - To start a device and cause it to start executing instructions.

**Bridge** - A device that connects two different kinds of local networks, such as a wireless network to a wired Ethernet network.

**Broadband** - An always-on, fast Internet connection.

**Browser** - A browser is an application program that provides a way to look at and interact with all the information on the World Wide Web.

## Wireless-G Ethernet Bridge

**Buffer** - A block of memory that temporarily holds data to be worked on later when a device is currently too busy to accept the data.

**Cable Modem** - A device that connects a computer to the cable television network, which in turn connects to the Internet.

**CSMA/CA** (Carrier Sense Multiple Access/Collision Avoidance) - A method of data transfer that is used to prevent data loss in a network.

**CTS** (Clear To Send) - A signal sent by a device to indicate that it is ready to receive data.

**Daisy Chain** - A method used to connect devices in a series, one after the other.

**Database** - A collection of data that is organized so that its contents can easily be accessed, managed, and updated.

**DDNS** (Dynamic Domain Name System) - The capability of having a website, FTP, or e-mail server-with a dynamic IP address-use a fixed domain name.

**Default Gateway** - A device that forwards Internet traffic from your local area network.

**DHCP** (Dynamic Host Configuration Protocol) - A protocol that lets one device on a local network, known as a DHCP server, assign temporary IP addresses to the other network devices, typically computers.

**DMZ** (Demilitarized Zone) - Removes the Router's firewall protection from one PC, allowing it to be "seen" from the Internet.

**DNS** (Domain Name Server) - The IP address of your ISP's server, which translates the names of websites into IP addresses.

**Domain** - A specific name for a network of computers.

**Download** - To receive a file transmitted over a network.

**DSL** (Digital Subscriber Line) - An always-on broadband connection over traditional phone lines.

**DSSS** (Direct-Sequence Spread-Spectrum) - A type of radio transmission technology that includes a redundant bit pattern to lessen the probability of data lost during transmission. Used in 802.11b networking.

**DTIM** (Delivery Traffic Indication Message) - A message included in data packets that can increase wireless efficiency.

**Dynamic IP Address** - A temporary IP address assigned by a DHCP server.

**Encryption** - Encoding data to prevent it from being read by unauthorized people.

**Ethernet** - An IEEE standard network protocol that specifies how data is placed on and retrieved from a common transmission medium.

**Finger** - A program that tells you the name associated with an e-mail address.

**Firewall** - Security measures that protect the resources of a local network from intruders.

**Firmware** - 1. In network devices, the programming that runs the device. 2. Programming loaded into read-only memory (ROM) or programmable read-only memory (PROM) that cannot be altered by end-users.

**Fragmentation** - Breaking a packet into smaller units when transmitting over a network medium that cannot support the original size of the packet.

**FTP (File Transfer Protocol)** - A standard protocol for sending files between computers over a TCP/IP network and the Internet.

**Full Duplex** - The ability of a networking device to receive and transmit data simultaneously.

**Gateway** - A system that interconnects networks.

**Half Duplex** - Data transmission that can occur in two directions over a single line, but only one direction at a time.

**Hardware** - The physical aspect of computers, telecommunications, and other information technology devices.

**HTTP (HyperText Transport Protocol)** - The communications protocol used to connect to servers on the World Wide Web.

**IEEE (The Institute of Electrical and Electronics Engineers)** - An independent institute that develops networking standards.

**Infrastructure** - Currently installed computing and networking equipment.

**Infrastructure Mode** - Configuration in which a wireless network is bridged to a wired network via an access point.

**IP (Internet Protocol)** - A protocol used to send data over a network.

**IP Address** - The address used to identify a computer or device on a network.

## Wireless-G Ethernet Bridge

**IPCONFIG** - A Windows 2000 and XP utility that displays the IP address for a particular networking device.

**IPSec** (Internet Protocol Security) - A VPN protocol used to implement secure exchange of packets at the IP layer.

**ISM band** - Radio band used in wireless networking transmissions.

**ISP** (Internet Service Provider) - A company that provides access to the Internet.

**LAN** (Local Area Network) - The computers and networking products that make up the network in your home or office.

**MAC** (Media Access Control) Address - The unique address that a manufacturer assigns to each networking device.

**Mbps** (Megabits Per Second) - One million bits per second; a unit of measurement for data transmission.

**Multicasting** - Sending data to a group of destinations at once.

**NAT** (Network Address Translation) - NAT technology translates IP addresses of a local area network to a different IP address for the Internet.

**Network** - A series of computers or devices connected for the purpose of data sharing, storage, and/or transmission between users.

**NNTP** (Network News Transfer Protocol) - The protocol used to connect to Usenet groups on the Internet.

**Node** - A network junction or connection point, typically a computer or work station.

**OFDM** (Orthogonal Frequency Division Multiplexing) - A type of modulation technology that separates the data stream into a number of lower-speed data streams, which are then transmitted in parallel. Used in 802.11a, 802.11g, and powerline networking.

**Packet** - A unit of data sent over a network.

**Passphrase** - Used much like a password, a passphrase simplifies the WEP encryption process by automatically generating the WEP encryption keys for Linksys products.

**Ping** (Packet INternet Groper) - An Internet utility used to determine whether a particular IP address is online.

**POP3** (Post Office Protocol 3) - A standard protocol used to retrieve e-mail stored on a mail server.

**Port** - 1. The connection point on a computer or networking device used for plugging in a cable or an adapter. 2. The virtual connection point through which a computer uses a specific application on a server.

## Wireless-G Ethernet Bridge

**PPPoE** (Point to Point Protocol over Ethernet) - A type of broadband connection that provides authentication (username and password) in addition to data transport.

**PPTP** (Point-to-Point Tunneling Protocol) - A VPN protocol that allows the Point to Point Protocol (PPP) to be tunneled through an IP network. This protocol is also used as a type of broadband connection in Europe.

**Preamble** - Part of the wireless signal that synchronizes network traffic.

**RJ-45** (Registered Jack-45) - An Ethernet connector that holds up to eight wires.

**Roaming** - The ability to take a wireless device from one access point's range to another without losing the connection.

**Router** - A networking device that connects multiple networks together, such as a local network and the Internet.

**RTS** (Request To Send) - A packet sent when a computer has data to transmit. The computer will wait for a CTS (Clear To Send) message before sending data.

**Server** - Any computer whose function in a network is to provide user access to files, printing, communications, and other services.

**SMTP** (Simple Mail Transfer Protocol) - The standard e-mail protocol on the Internet.

**SNMP** (Simple Network Management Protocol) - A widely used network monitoring and control protocol.

**Software** - Instructions for the computer. A series of instructions that performs a particular task is called a "program".

**Spread Spectrum** - Wideband radio frequency technique used for more reliable and secure data transmission.

**SSID** (Service Set Identifier) - Your wireless network's name.

**Static IP Address** - A fixed address assigned to a computer or device that is connected to a network.

**Static Routing** - Forwarding data in a network via a fixed path.

**Subnet Mask** - An address code that determines the size of the network.

**Switch** - 1. Device that is the central point of connection for computers and other devices in a network, so data can be shared at full transmission speeds. 2. A device for making, breaking, or changing the connections in an electrical circuit.

## Wireless-G Ethernet Bridge

**TCP/IP** (Transmission Control Protocol/Internet Protocol) - A network protocol for transmitting data that requires acknowledgement from the recipient of data sent.

**Telnet** - A user command and TCP/IP protocol used for accessing remote PCs.

**TFTP** (Trivial File Transfer Protocol) - A version of the TCP/IP FTP protocol that uses UDP and has no directory or password capability.

**Throughput** - The amount of data moved successfully from one node to another in a given time period.

**Topology** - The physical layout of a network.

**TX Rate** - Transmission Rate.

**UDP** (User Datagram Protocol) - A network protocol for transmitting data that does not require acknowledgement from the recipient of the data that is sent.

**Upgrade** - To replace existing software or firmware with a newer version.

**Upload** - To transmit a file over a network.

**URL** (Uniform Resource Locator) - The address of a file located on the Internet.

**VPN** (Virtual Private Network) - A security measure to protect data as it leaves one network and goes to another over the Internet.

**WAN** (Wide Area Network) - The Internet.

**WEP** (Wired Equivalent Privacy) - A method of encrypting data transmitted on a wireless network for greater security.

**WINIPCFG** - A Windows 98 and Millennium utility that displays the IP address for a particular networking device.

**WLAN** (Wireless Local Area Network) - A group of computers and associated devices that communicate with each other wirelessly.

# Appendix F: Specifications

Model	WET54G
Standards	IEEE 802.11g, IEEE 802.11b, IEEE 802.3, IEEE 802.3u
Ports	One 10/100 Auto-Cross Over (MDI/MDI-X) Port, Power Port
Buttons	Reset Button
Cabling Type	Category 5 or better
LEDs	Power, Ethernet, Wireless
Transmit Power	16 ± 1 dBm @ 11Mbps CCK 12 ± 1 dBm @ 54Mbps OFDM
Security Feature	WEP Encryption
WEP Key Bits	64/128-bit
Protocols	802.11b: CCK (11Mbps), CCK (5.5Mbps), DQPSK (2Mbps), DBPSK (1Mbps) 802.11g: OFDM (54Mbps)
Dimensions	4.96" x 1.06" x 4.21" (126 mm x 27 mm x 107 mm)
Unit Weight	8.50 oz. (0.24 kg)
Power	5V DC
Certifications	FCC, CE
Operating Temp.	32°F to 104°F (0°C to 40°C)

Wireless-G Ethernet Bridge

Storage Temp.	-4°F to 158°F (-20°C to 70°C)
Operating Humidity	10% to 85%, Non-Condensing
Storage Humidity	5% to 90%, Non-Condensing
Warranty	3 Year Limited Warranty

# Appendix G: Warranty Information

## LIMITED WARRANTY

Linksys warrants to You that, for a period of three years (the “Warranty Period”), your Linksys Product will be substantially free of defects in materials and workmanship under normal use. Your exclusive remedy and Linksys' entire liability under this warranty will be for Linksys at its option to repair or replace the Product or refund Your purchase price less any rebates. This limited warranty extends only to the original purchaser.

If the Product proves defective during the Warranty Period call Linksys Technical Support in order to obtain a Return Authorization Number, if applicable. BE SURE TO HAVE YOUR PROOF OF PURCHASE ON HAND WHEN CALLING. If You are requested to return the Product, mark the Return Authorization Number clearly on the outside of the package and include a copy of your original proof of purchase. RETURN REQUESTS CANNOT BE PROCESSED WITHOUT PROOF OF PURCHASE. You are responsible for shipping defective Products to Linksys. Linksys pays for UPS Ground shipping from Linksys back to You only. Customers located outside of the United States of America and Canada are responsible for all shipping and handling charges.

ALL IMPLIED WARRANTIES AND CONDITIONS OF MERCHANTABILITY OR FITNESS FOR A PARTICULAR PURPOSE ARE LIMITED TO THE DURATION OF THE WARRANTY PERIOD. ALL OTHER EXPRESS OR IMPLIED CONDITIONS, REPRESENTATIONS AND WARRANTIES, INCLUDING ANY IMPLIED WARRANTY OF NON-INFRINGEMENT, ARE DISCLAIMED. Some jurisdictions do not allow limitations on how long an implied warranty lasts, so the above limitation may not apply to You. This warranty gives You specific legal rights, and You may also have other rights which vary by jurisdiction.

This warranty does not apply if the Product (a) has been altered, except by Linksys, (b) has not been installed, operated, repaired, or maintained in accordance with instructions supplied by Linksys, or (c) has been subjected to abnormal physical or electrical stress, misuse, negligence, or accident. In addition, due to the continual development of new techniques for intruding upon and attacking networks, Linksys does not warrant that the Product will be free of vulnerability to intrusion or attack.

TO THE EXTENT NOT PROHIBITED BY LAW, IN NO EVENT WILL LINKSYS BE LIABLE FOR ANY LOST DATA, REVENUE OR PROFIT, OR FOR SPECIAL, INDIRECT, CONSEQUENTIAL, INCIDENTAL OR PUNITIVE DAMAGES, REGARDLESS OF THE THEORY OF LIABILITY (INCLUDING NEGLIGENCE), ARISING OUT OF OR RELATED TO THE USE OF OR INABILITY TO USE THE PRODUCT (INCLUDING ANY SOFTWARE), EVEN IF LINKSYS HAS BEEN ADVISED OF THE POSSIBILITY OF SUCH DAMAGES. IN NO EVENT WILL LINKSYS' LIABILITY EXCEED THE AMOUNT PAID BY YOU FOR THE PRODUCT. The foregoing limitations will apply even if any warranty or remedy provided under this Agreement fails of its essential purpose. Some jurisdictions do not allow the exclusion or limitation of incidental or consequential damages, so the above limitation or exclusion may not apply to You.

Please direct all inquiries to: Linksys, P.O. Box 18558, Irvine, CA 92623.

# Appendix H: Regulatory Information

## FCC Statement

This product has been tested and complies with the specifications for a Class B digital device, pursuant to Part 15 of the FCC Rules. These limits are designed to provide reasonable protection against harmful interference in a residential installation. This equipment generates, uses, and can radiate radio frequency energy and, if not installed and used according to the instructions, may cause harmful interference to radio communications. However, there is no guarantee that interference will not occur in a particular installation. If this equipment does cause harmful interference to radio or television reception, which is found by turning the equipment off and on, the user is encouraged to try to correct the interference by one or more of the following measures:

- Reorient or relocate the receiving antenna
- Increase the separation between the equipment or devices
- Connect the equipment to an outlet other than the receiver's
- Consult a dealer or an experienced radio/TV technician for assistance

## FCC Radiation Exposure Statement

This equipment complies with FCC radiation exposure limits set forth for an uncontrolled environment. This equipment should be installed and operated with minimum distance 20cm between the radiator and your body.

## Industry Canada (Canada)

This Class B digital apparatus complies with Canadian ICES-003.

Cet appareil numérique de la classe B est conforme à la norme NMB-003 du Canada.

The use of this device in a system operating either partially or completely outdoors may require the user to obtain a license for the system according to the Canadian regulations.

## Compliance Information for 2.4-GHz Wireless Products Relevant to EU and Other Countries Following EU Directive 1999/5/EC (R&TTE Directive)

### Declaration of Conformity with Regard to the EU Directive 1995/5/EC (R&TTE Directive)

Deutsch [German]:	Dieses Gerät entspricht den grundlegenden Anforderungen und den weiteren entsprechenden Vorgaben der Richtlinie 1999/5/EU.
Dansk [Danish]:	Dette udstyr er i overensstemmelse med de væsentlige krav og andre relevante bestemmelser i Direktiv 1999/5/EF.
English:	This equipment is in compliance with the essential requirements and other relevant provisions of Directive 1999/5/EC
Español [Spanish]:	Este equipo cumple con los requisitos esenciales así como con otras disposiciones de la Directiva 1999/5/CE.
Ελληνική [Greek]:	Αυτό το εξοπλισμός είναι σε συμμόρφωση με τις ουσιώδεις απαιτήσεις και άλλες σχετικές διατάξεις της Οδηγίας 1999/5/EC.
Français [French]:	Cet appareil est conforme aux exigences essentielles et aux autres dispositions pertinentes de la Directive 1999/5/EC.
Íslenska [Icelandic]:	Þetta tæki er samkvæmt grunnkröfum og öðrum viðeigandi ákvæðum Tilskipunar 1999/5/EC.
Italiano [Italian]:	Questo apparato é conforme ai requisiti essenziali ed agli altri principi sanciti dalla Direttiva 1999/5/CE.
Nederlands [Dutch]:	Dit apparaat voldoet aan de essentiële eisen en andere van toepassing zijnde bepalingen van de Richtlijn 1999/5/EC.
Norsk [Norwegian]:	Dette utstyret er i samsvar med de grunnleggende krav og andre relevante bestemmelser i EU-direktiv 1999/5/EF.
Português [Portuguese]:	Este equipamento está em conformidade com os requisitos essenciais e outras provisões relevantes da Directiva 1999/5/EC.
Suomi [Finnish]:	Tämä laite täyttää direktiivin 1999/5/EY olennaiset vaatimukset ja on siinä asetettujen muiden laitetta koskevien määräysten mukainen.
Svenska [Swedish]:	Denna utrustning är i överensstämmelse med de väsentliga kraven och andra relevanta bestämmelser i Direktiv 1999/5/EC.

**NOTE:** If you need any technical documentation, see the “How to Access Technical Documents on [www.linksys.com/international](http://www.linksys.com/international)” section for more information.

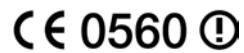
## Wireless-G Ethernet Bridge

The following standards were applied during the assessment of the product against the requirements of the Directive 1999/5/EC:

- Radio: EN 300.328
- EMC: EN 301 489-1, EN 301 489-17
- Safety: EN 60950

## CE Marking

For the Wireless-G Ethernet Bridge (WET54G), the following CE mark, notified body number, and class 2 identifier is added to the equipment:



## National Restrictions

This product may be used in all EU countries (and other countries following the EU directive 1999/5/EC) without any limitation except for the countries mentioned below:

*Ce produit peut être utilisé dans tous les pays de l'UE (et dans tous les pays ayant transposés la directive 1999/5/CE) sans aucune limitation, excepté pour les pays mentionnés ci-dessous:*

*Questo prodotto è utilizzabile in tutte i paesi EU (ed in tutti gli altri paesi che seguono le direttive EU 1999/5/EC) senza nessuna limitazione, eccetto per i paesi menzionati di seguito:*

*Das Produkt kann in allen EU Staaten ohne Einschränkungen eingesetzt werden (sowie in anderen Staaten die der EU Direktive 1995/5/CE folgen) mit Ausnahme der folgenden aufgeführten Staaten:*

### France

In case the product is used outdoors, the output power is restricted in some parts of the band. See Table 1 or check <http://www.art-telecom.fr/> for more details.

*Dans la cas d'une utilisation en extérieur, la puissance de sortie est limitée pour certaines parties de la bande. Reportez-vous à la table 1 ou visitez <http://www.art-telecom.fr/> pour de plus amples détails.*

Table 1: Applicable Power Levels in France

Location	Frequency Range (MHz)	Power (EIRP)
Indoor (No restrictions)	2400-2483.5	100 mW (20 dBm)
Outdoor	2400-2454 2454-2483.5	100 mW (20 dBm) 10 mW (10 dBm)

## Italy

This product meets the National Radio Interface and the requirements specified in the National Frequency Allocation Table for Italy. Unless operating within the boundaries of the owner's property, the use of this 2.4 GHz Wireless LAN product requires a 'general authorization'. Please check with <http://www.comunicazioni.it/> for more details.

*Questo prodotto è conforme alle specifiche di Interfaccia Radio Nazionali e rispetta il Piano Nazionale di ripartizione delle frequenze in Italia. Se non viene installato all'interno del proprio fondo, l'utilizzo di prodotti Wireless LAN a 2.4 GHz richiede una "Autorizzazione Generale". Consultare <http://www.comunicazioni.it/> per maggiori dettagli.*

## How to Access Technical Documents on [www.linksys.com/international](http://www.linksys.com/international)

Follow these steps to access technical documents:

1. Browse to <http://www.linksys.com/international>.
2. Click the region in which you reside.
3. Click the name of the country in which you reside.
4. Click **Products**.
5. Click the appropriate product category.
6. Select a product.
7. Click the type of documentation you want. The document will automatically open in PDF format.

**NOTE:** If you have questions regarding the compliance of this product or you cannot find the information you are looking for, please contact your local sales office. Visit <http://www.linksys.com/international> for more details.

# Appendix I: Contact Information

Need to contact Linksys?

Visit us online for information on the latest products and updates to your existing products at:

<http://www.linksys.com> or  
[ftp.linksys.com](ftp://ftp.linksys.com)

Can't find information about a product you want to buy on the web? Do you want to know more about networking with Linksys products? Give our advice line a call at:  
Or fax your request in to:

800-546-5797 (LINKSYS)  
949-261-8868

If you experience problems with any Linksys product, you can call us at:

800-326-7114  
[support@linksys.com](mailto:support@linksys.com)

Don't wish to call? You can e-mail us at:

If any Linksys product proves defective during its warranty period, you can call the Linksys Return Merchandise Authorization department for obtaining a Return Authorization Number at:  
(Details on Warranty and RMA issues can be found in the Warranty Information section in this Guide.)

949-261-1288